



Architectural Concrete Chemicals

223 West Hampton Avenue

Capitol Heights, MD 20743

(301) 336-9300 : (800) 638-2672

Fax (301) 336-6597

Optimus Surface Retarder

PRODUCT DESCRIPTION: Optimus Surface Retarders are water- based, polymerized high performance top surface retarders which do not require time consuming and costly covering for protection. They are available in 12 grades from a light acid wash to a full exposure of a 1" aggregate. See the grade selection chart on the back for proper selection for your application.

AREA OF APPLICATION: Perfectly suited for cast- in- place flatwork as well as the top surface of precast panels. Optimus Surface Retarders provide a wide variety of effects due to the comprehensive range of grades within the line allowing for multiple finishes on the same concrete or within the same precast panel.

DIRECTIONS: Thoroughly mix before application. Screed concrete flat and finish as normal. When producing the micro finishes this process may require multiple passes using both floats and trowels to create a smooth and tight surface to achieve the desired results. After proper finishing apply the appropriate Surface Retarder after the evaporation of the initial bleed water. Apply using a low-pressure garden type pump sprayer (plastic preferred) at the rate of 250-300 sq.ft./gal. until a hiding coat is achieved. Once dry, Surface Retarders provide intermittent rain protection and do not require additional covering to ensure performance and reduce surface crusting. *If constant rain is expected use ACC Rain Shield a pigmented polymer based liquid sprayed over the Surface Retarder when dry for the ultimate in protection. Always prepare a test sample to determine the proper grade for the desired effect. Test samples should always simulate jobsite conditions as well as mix designs, washing intervals and all procedures to be used during the project.*

TECHNICAL DATA: Water – Based; all additives are non-hazardous and completely biodegradable. VOC Content – National Volatile Organic Emission calculation 6 g/L/ 0.05 lb./gal.

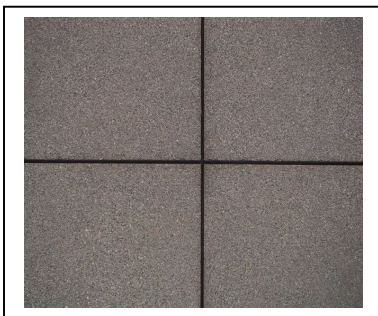
SHELF LIFE AND STORAGE: Two years from manufacturing date in closed original container. Keep from freezing.

PACKAGING: 5 gal. Plastic Pails, 55 gal. Drums and 275 –gal. Totes

SAFETY: Water-based, non-toxic VOC compliant in all jurisdictions including the SCAQMD.

<u>Finish Type</u>	<u>Grade Selection & Color Code</u>	<u>Exposure</u>	<u>Aggregate Size</u>
Micro Finish	Super Lite - Tan (01) Xtra Lite - White (03) Sand - Teal (05) Blue	Light Acid Wash Med. Acid Wash Sand Exposure	Sand Sand Sand
Sand Blast Finish	Lite - Green (15) Medium - Orange (25) Deep - Blue (50)	Light Sandblast Med. Sandblast Deep Sandblast	1/8-1/4" 1/4-3/8" 3/8"
Exposed Finish	Small Agg. - Yellow (75) Med. Agg. - Lt. Green(125) Large Agg. - Pink (175) XLarge Agg.- Gray (250)		3/8" 1/2" 5/8" 3/4 +

Micro Finish Series



Sand-Blast Finish Series



Exposed Finish Series



*** Note:** When using the Super-Lite Finish in the Micro Series it is generally better to remove the retarder the same day for best results or generally within 8-12 hours of finishing.