

ACC Altus Series In-Form Retarders offer unmatched reliability and superior control for exposed aggregate finishes for high performance precast and in-situ (cast-in-place) applications. ACC's unique selection of surface finishes add beauty and durability to your architectural concrete.



## Also Available

**FORM-SEAL** – A medium-use (40 casts) moisture cured urethane designed for sealing plywood, timber and concrete formwork.

**DURO-SEAL 2010** – A two-component self-leveling epoxy that creates a hard crack resistant wear surface on plywood, timber or concrete formwork. V.O.C. compliant, 100% total solids, contains white pigment for easy layout during form setting. When applied correctly, Duro-Seal creates the longest service life possible without using steel.

**ACC 031 LACQUER** – A proven high performance lacquer for use in precast formwork when time is of the essence. Drying in 45 minutes, this lacquer can be sanded and coated as many times as necessary. Works extremely well with plaster molds or models when removing blemishes in the form surface are important to the final finish.

**ACC TUFF RELEASE** – Semi-liquid, high viscosity release which ensures the highest quality architectural and structural surfaces. Designed for use with the most intricate molds and formwork as well as highly super-plasticized (SCC) concrete.

**ACC RUFF RELEASE** – A unique thickened blue colored release primarily for low or no draft applications, particularly useful on plaster moldwork.

## Directions for Use

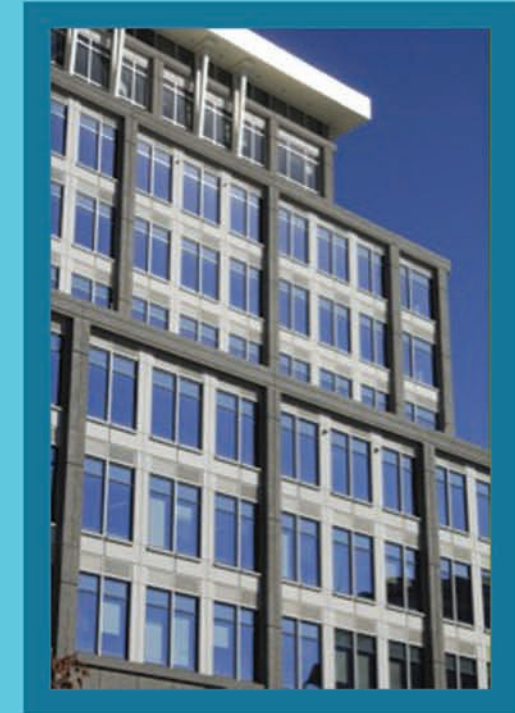
- Mix thoroughly prior to each use with a Jiffler type mixer and drill motor.
- Apply ACC Pre-Cote by roller as needed to eliminate form clean-up (generally precast applications only).
- After Pre-Cote has dried, apply a single coat of Altus Series In-Form Retarder by brush, roller or airless sprayer at a rate of 300-400 ft<sup>2</sup> / gal (7.7 – 10.3 m<sup>2</sup> / L), 4-6 mils coating.
- Retarder should be dry for concrete placement within 15-30 minutes, depending on ambient temperature. Altus Series products are designed to require only one coat (saving time and money) and have outstanding heat resistance in excess of 180°F, perfect for insulated prestressed or architectural precast panels.
- Placement times of up to 40 minutes are recommended, allowing for sufficient time for concrete to be placed and vibrated without affecting the finish.
- When using steam or other high heat sources to cure concrete, bring the temperatures up gradually no more than 10°F per hour to allow the retarder to completely react with the cement matrix.
- When used on plywood or other wood surfaces, properly seal with ACC Form-Seal. For long term durability, ACC Duro-Seal 2010 should be used.

## Notes

- For most uniform results on higher strength precast panels, remove the retarded matrix daily as early as possible.
- Rollers and tools used to apply retarder should be cleaned using solvents such as ACC Citri-Solv, toluene, or xylene. Water should never be used, except on Pre-Cote rollers.
- Always test using same mix design and conditions under which the retarders will be used (heat, panel thickness, etc).

# ACC ALTUS SERIES IN-FORM RETARDERS

*Your Partners To The Finish*



Architectural Concrete Chemicals  
Capital Heights, MD  
www.acchemicals.com  
301-336-9300

*Architectural Concrete  
Chemicals*

# Choose your finish

- Available in 10 grades - from light micro finishes to full depth exposed aggregate.
- Selection is dependent on the size of the aggregate to be exposed and the strength of the concrete mix and cement content.
- ACC Pre-Cote or Pre-Cote WB is recommended for all precast applications to eliminate costly form clean-up.

**Values listed are based on standard mixes with 658 lbs. of cement (7 Sack) per cubic yard. Coverage Rates from 300 – 400 ft<sup>2</sup> /gal. (7.5- 10.3 m<sup>2</sup>/L) using roller or airless sprayer.**

**Always test with the grade selected under production conditions including heat and panel thickness for best results.**

# Altus In-Form Retarders from ACC

	Product Name	Type of Finish	Aggregate Size and Product Color	
Micro	Xtra-Lite ( 03 )	Medium Acid Wash	Medium Sand Texture	White
	Sand ( 05 )	Sand Finish Exposure	Coarse Sand Texture	Lt. Blue
	Xtra-Lite SandBlast (10)	Extra Lite Sandblast	1/8" - 1/4" Aggregate	Blue/Green
Medium	Lite ( 15 )	Lite Sand Blast Texture	1/8" - 1/4" Aggregate	Green
	Medium ( 25 )	Medium Sand Blast Texture	1/4" - 3/8" Aggregate	Orange
	Deep ( 50 )	Deep/Heavy Sand Blast Texture	3/8" - 1/2" Aggregate	Blue
	Small Aggregate ( 75 )	Small Aggregate Full Depth Exposure	3/8" Aggregate	Yellow
Deep	Med. Aggregate (125)	Medium Aggregate Full Depth Exposure	1/2" Aggregate	Lt. Green
	Large Aggregate (175)	Large Aggregate Full Depth Exposure	5/8" Aggregate	Pink
	XL Aggregate (250)	Xtra Large Aggregate Full Exposure	3/4" + Aggregate	Gray

**Get Better Results, A Single Coat With High Heat Resistance and High Coverage Rates  
Excellent Transfer With Little or No Clean-up Required**

## 1. APPLY

Apply after Pre-Cote has dried if used Spray or roller apply Pigmented Retarder to provide proper coverage



## 2. STRIP PANELS

Remove surface generally within 24 hours, using high pressure water or sand once panels are removed from the forms



## 3. SHOWCASE AND REVEAL

More uniform results  
Provides increased productivity  
Multiple finishes more easily accomplished  
Faster turnaround times provide for quicker openings

